

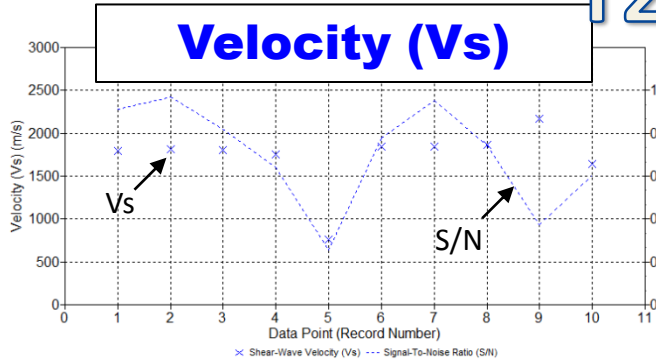
Automatic Analysis Results

(“T210109_25.tdms” and “T210109_140.tdms”)

- “T210109_25.tdms” (a total of 10 records)
- “T210109_140.tdms” (a total of 100 records)
- Velocity (V_s) (m/s) and thickness (H) (cm) results per record
- Results obtained by using four (4) different “Lateral Continuity (LC)” settings; i.e., LC = 0, 1, 2, and 3.
- LC = 1 means one previous and one next dispersion images are stacked to current dispersion image, LC=0 means no stacking, and so on. Default value in ParkSEIS-HMA is 3, which is provided as an option in the “Output” page.
- Example dispersion images obtained by using different LC values are presented at the end of this file for the first 20 records from “T210109_140.tdms.”

T210109_25.TDMS

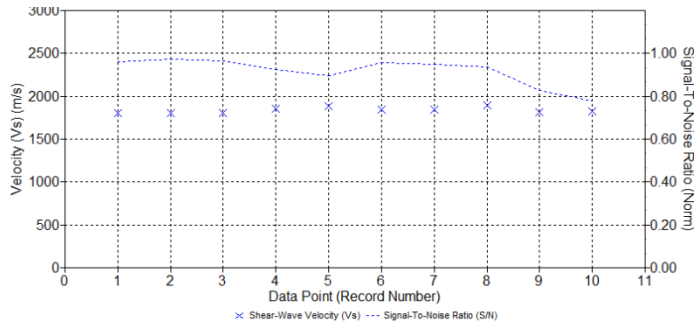
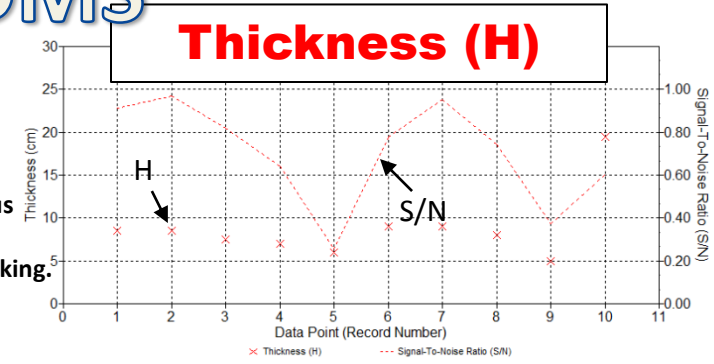
Velocity (Vs)



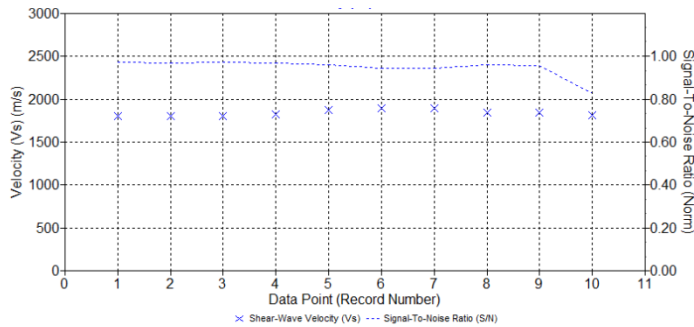
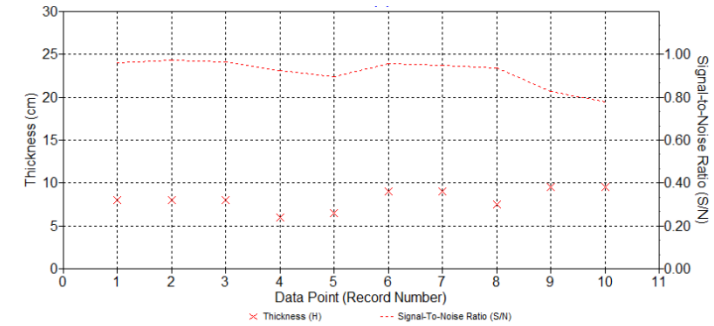
LC* = 0

*Lateral continuity (LC) = 1 means one previous and one next dispersion images are stacked to current dispersion image. LC=0 means no stacking.

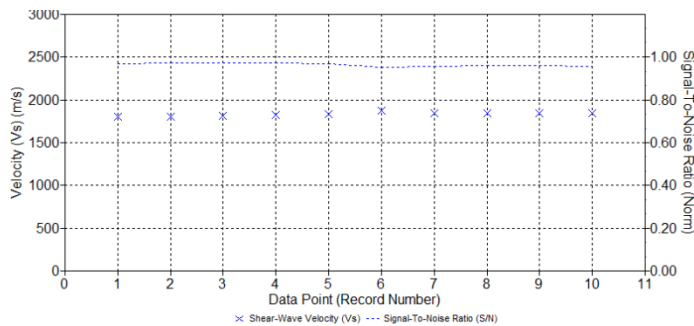
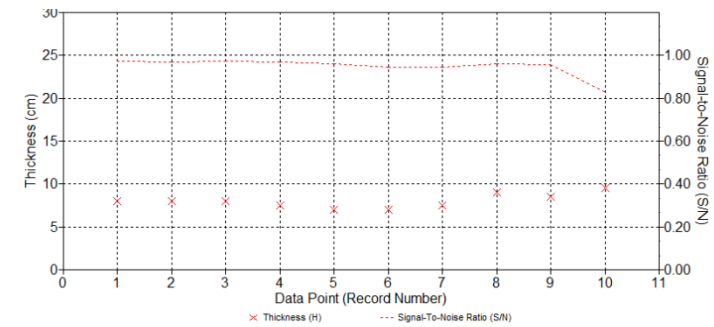
Thickness (H)



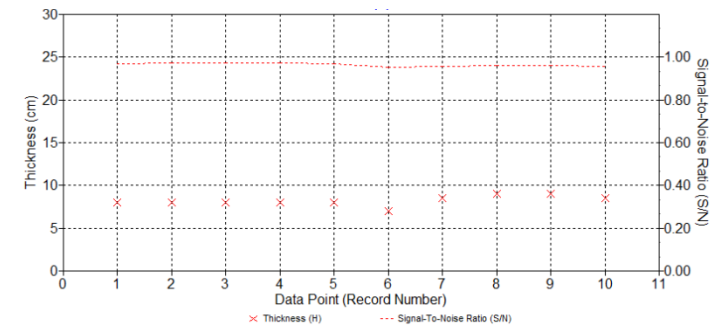
LC* = 1



LC* = 2

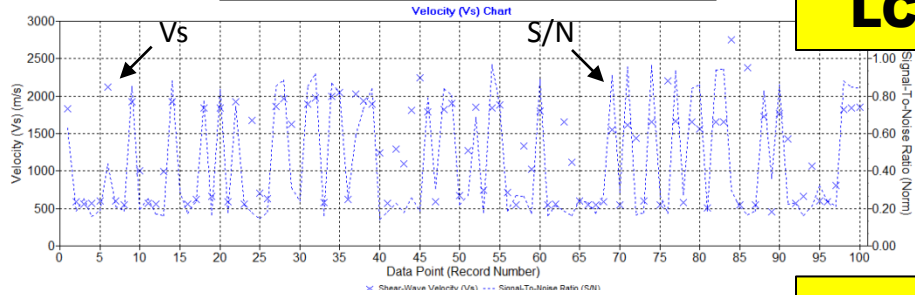


LC* = 3



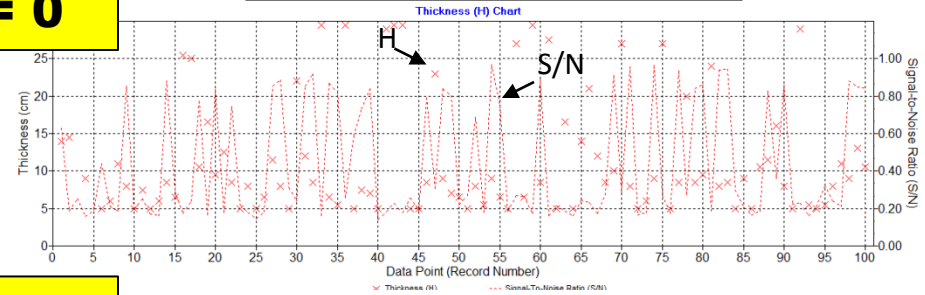
T210109_140.TDMS

Velocity (Vs)

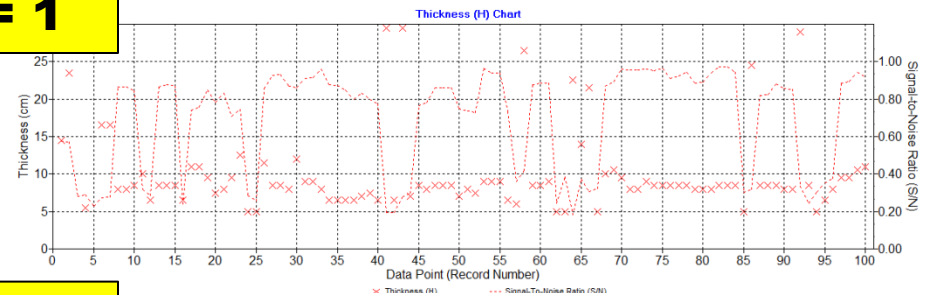
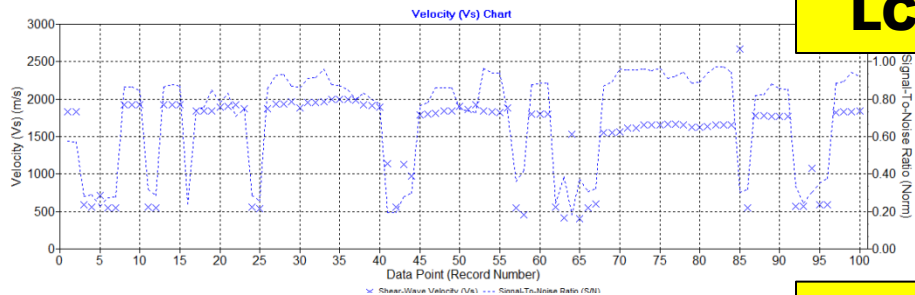


LC = 0

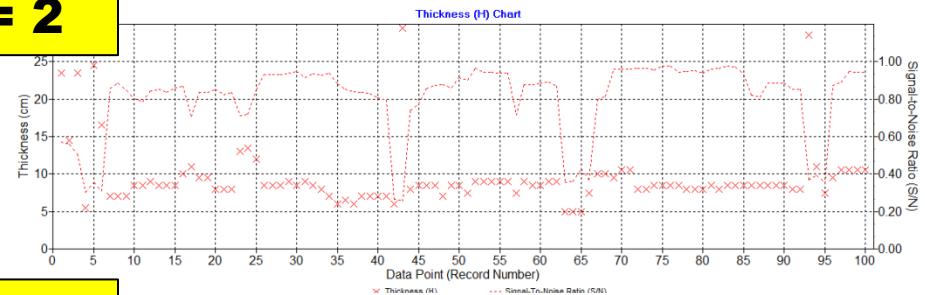
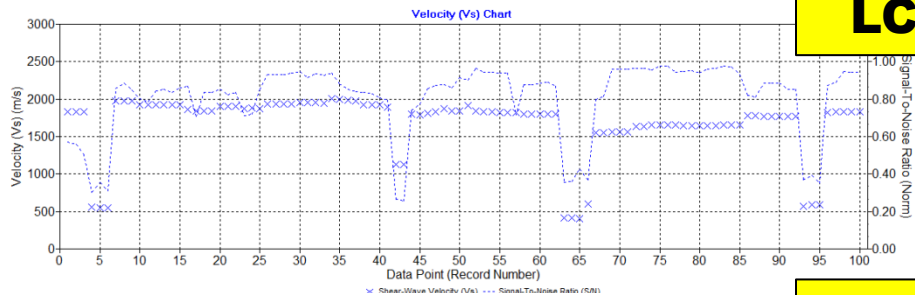
Thickness (H)



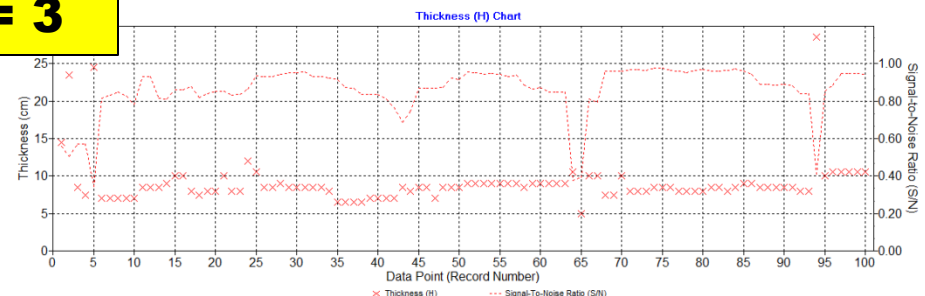
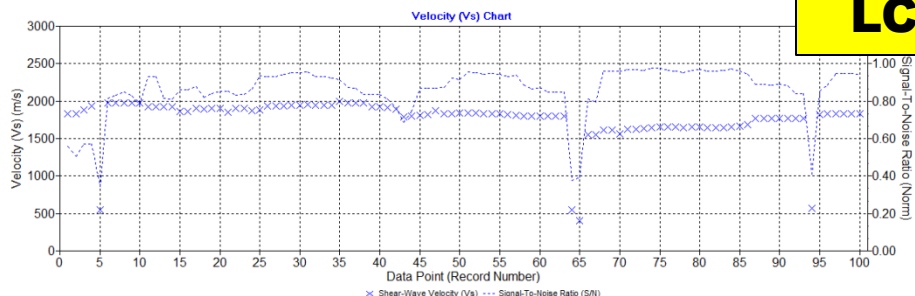
LC = 1



LC = 2

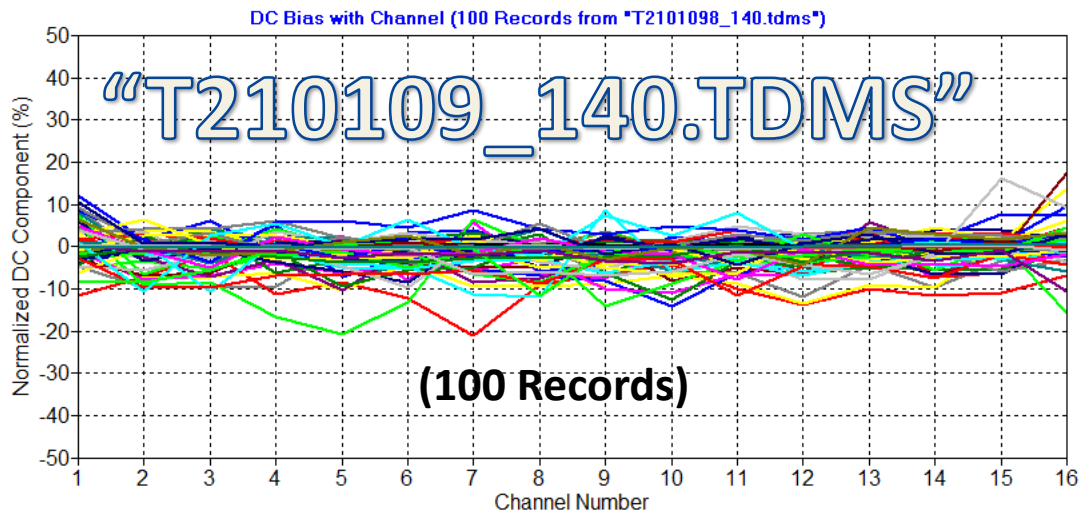
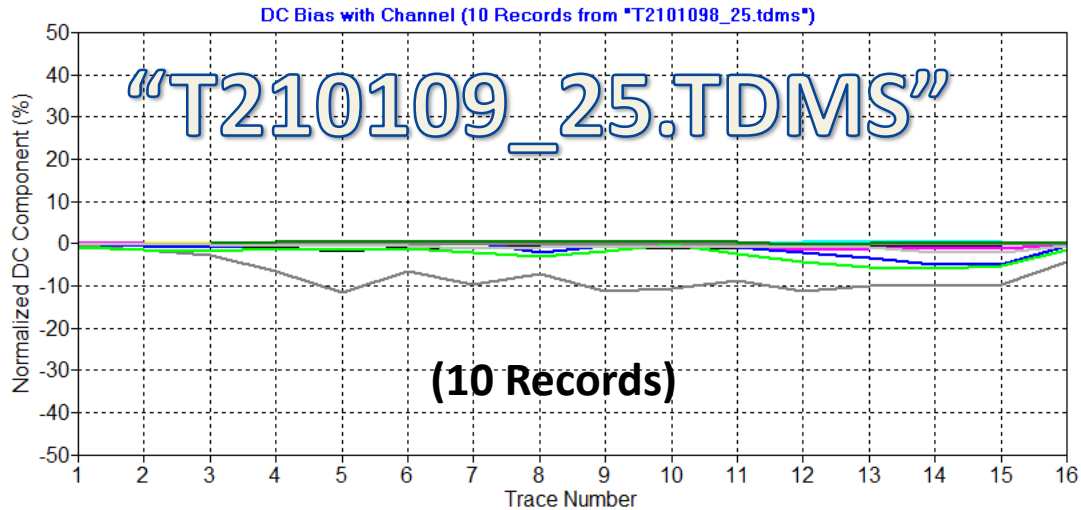


LC = 3



DC Bias

Each channel's all (1000) amplitudes are summed to get a DC value. Then, it is normalized with respect to the absolute value of the maximum amplitude. One line of graph represents such normalized values for all (16) channels (traces) in one record.

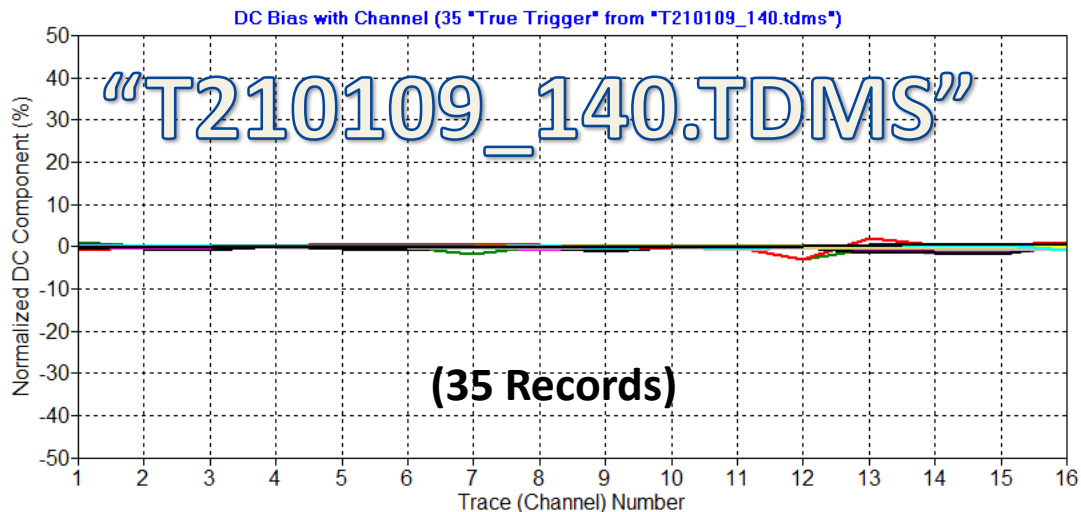


DC Bias

Only those of “true” trigger records were selected from “T210109_140.tdms” and corresponding DC bias graphs are displayed below. It seems there is little DC bias observed. These record numbers are listed below.

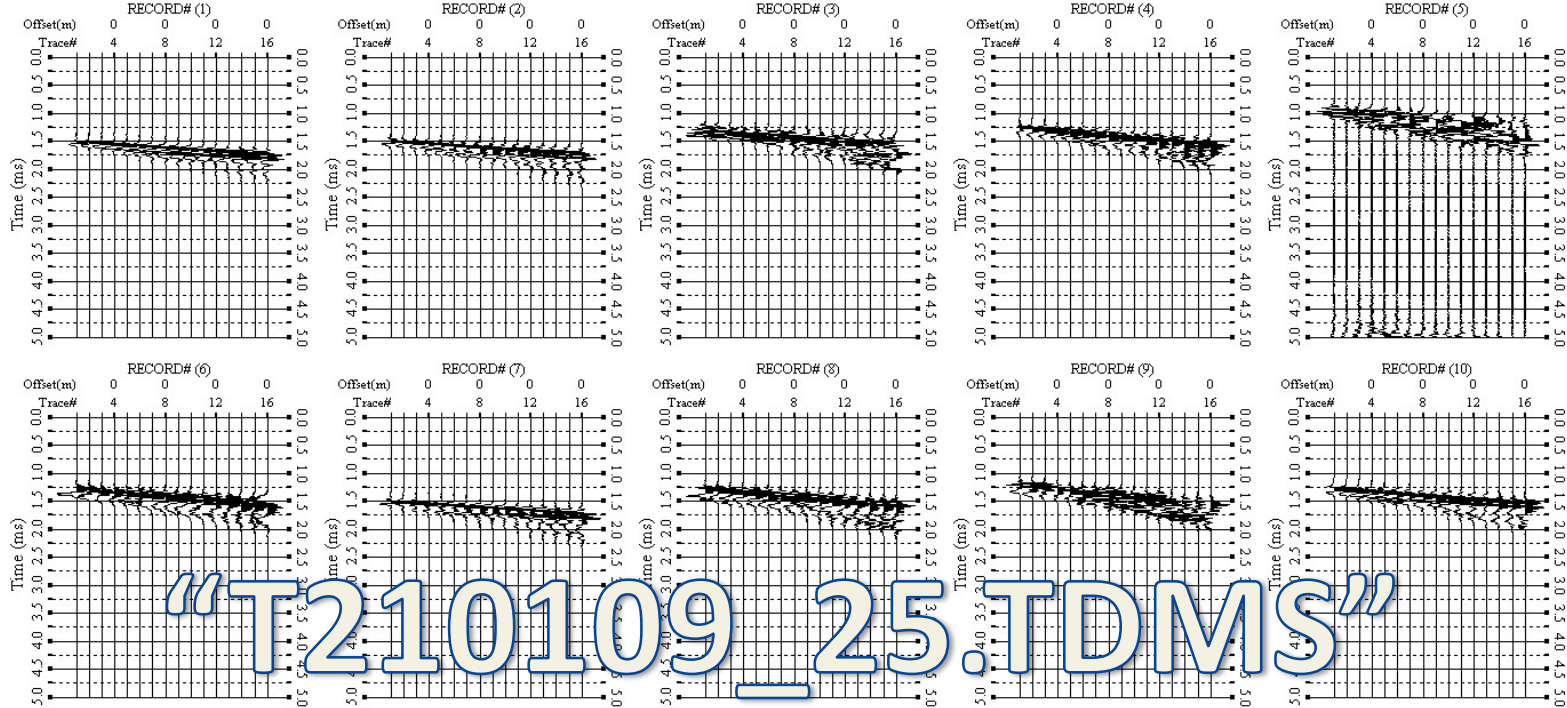
“True” Trigger Record Numbers (35 Total)

| | | | | | | | | | |
|----|----|----|----|-----|----|----|----|----|----|
| 1 | 9 | 14 | 18 | 20 | 22 | 27 | 28 | 31 | 32 |
| 34 | 35 | 37 | 38 | 39 | 46 | 48 | 49 | 52 | 54 |
| 55 | 60 | 69 | 71 | 74 | 77 | 79 | 80 | 82 | 83 |
| 88 | 90 | 98 | 99 | 100 | | | | | |



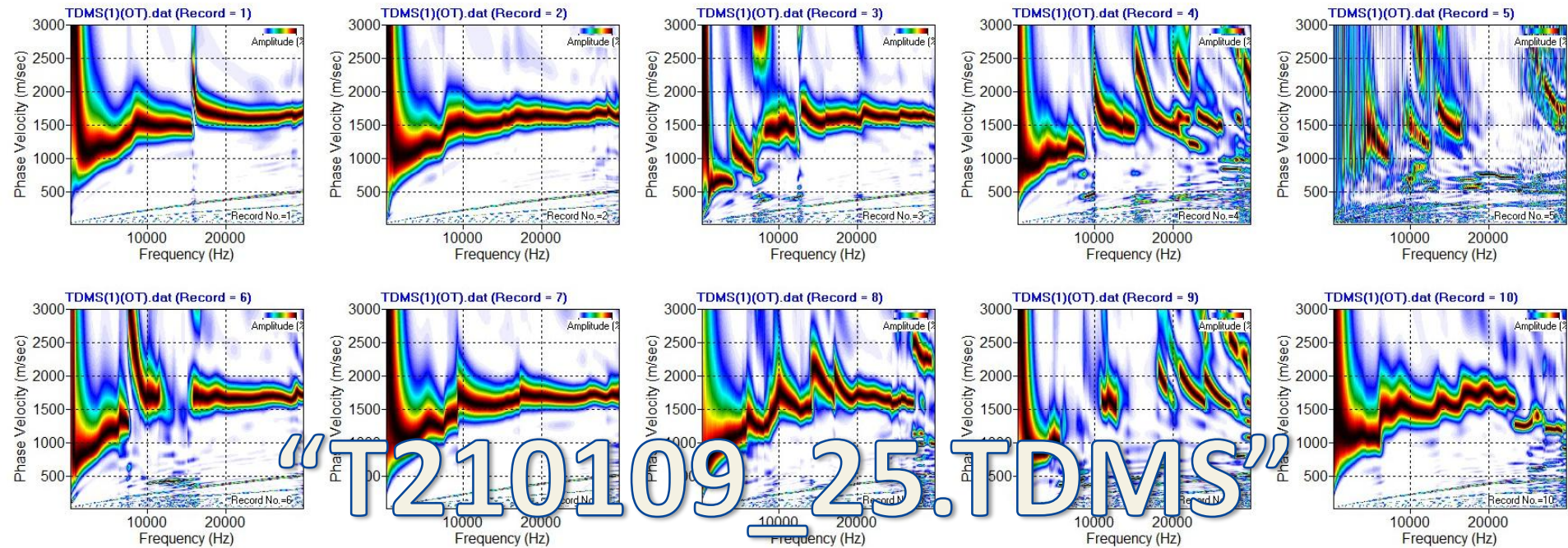
Display of RAW and Processed Records ("T210109_25.tdms")

- RAW records (a total of 10 records)
- Automatically Muted Records
- Dispersion Image of Muted Records



“T210109_25.TDMS”

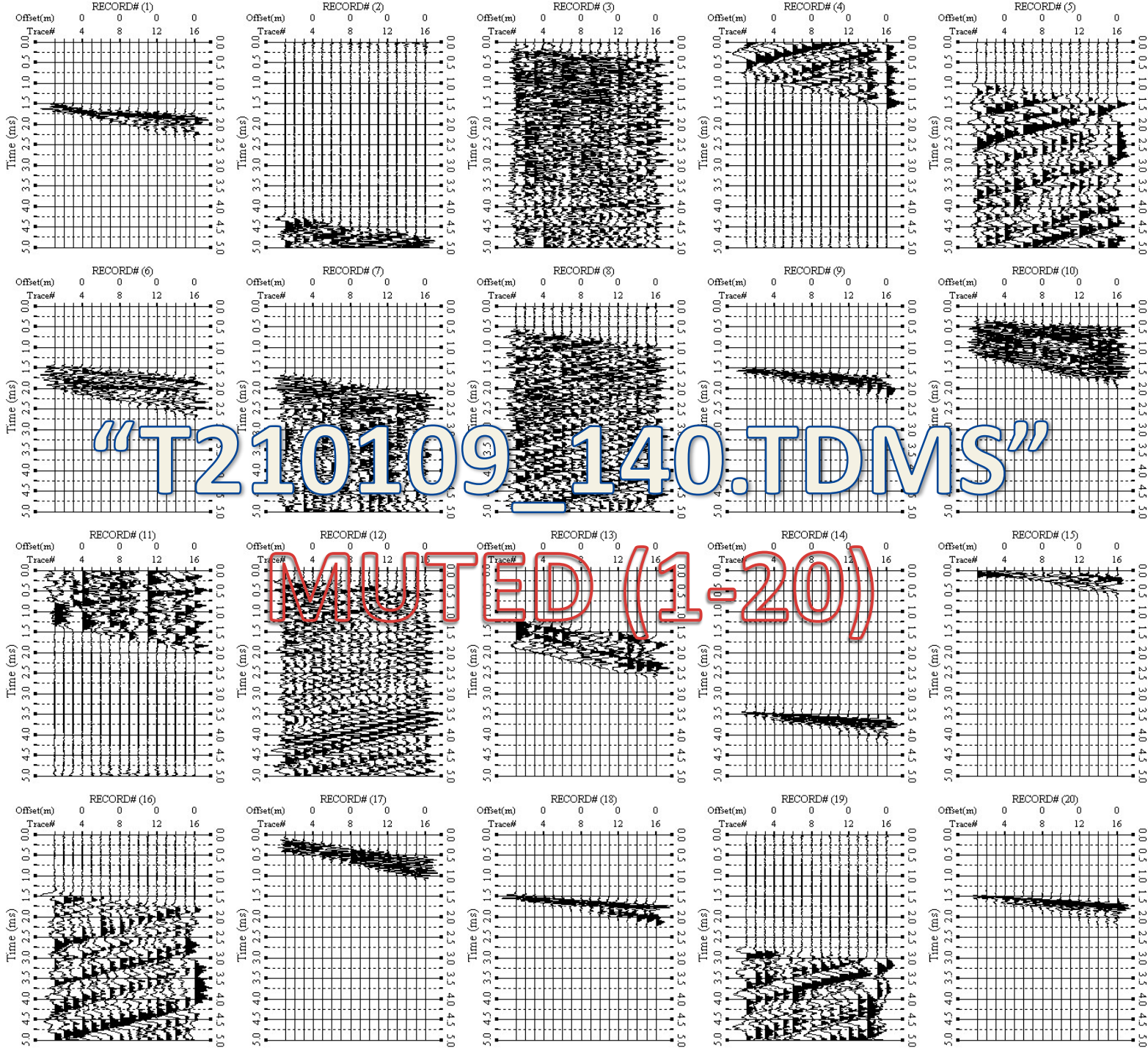
MUTED (1-10)

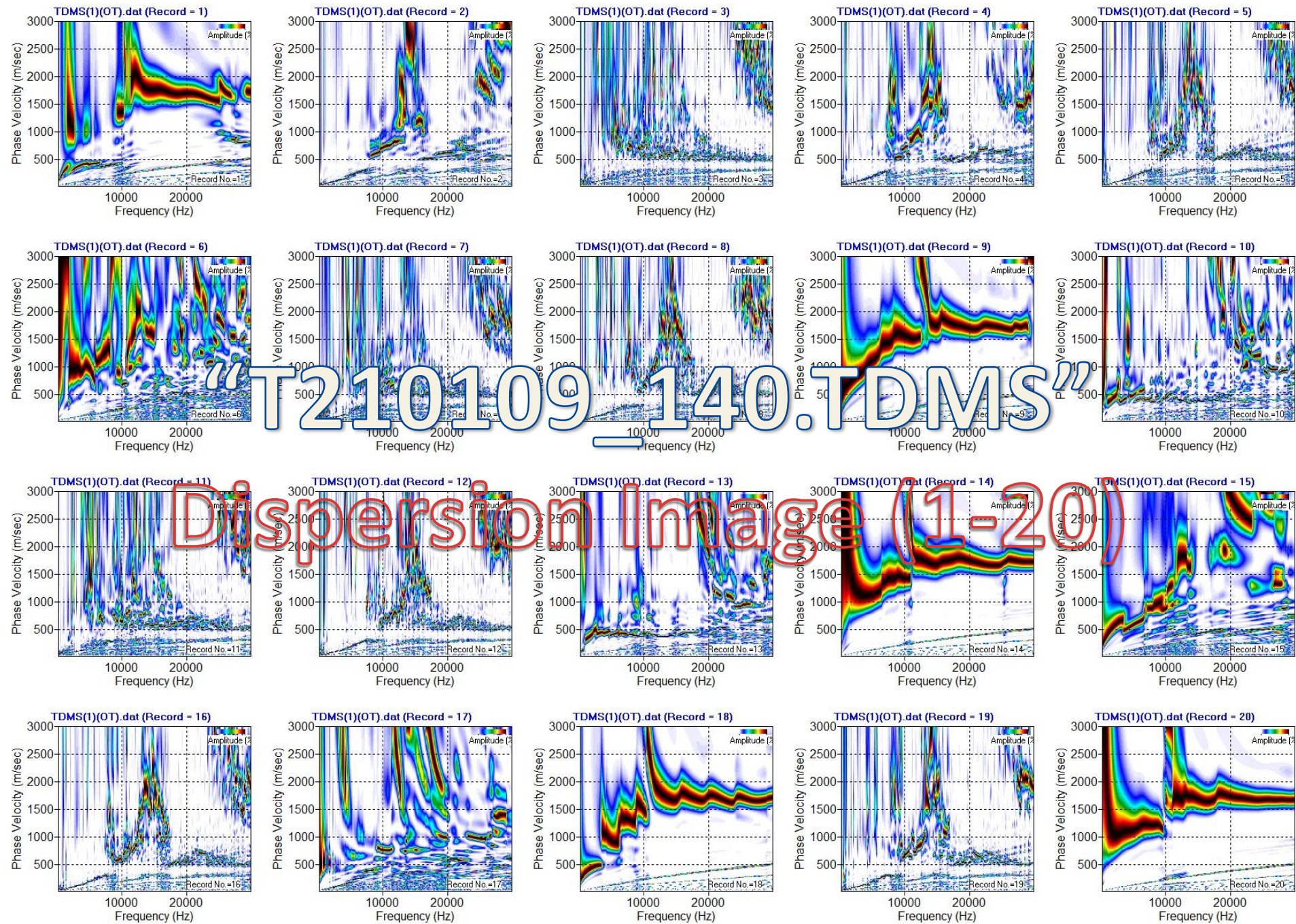


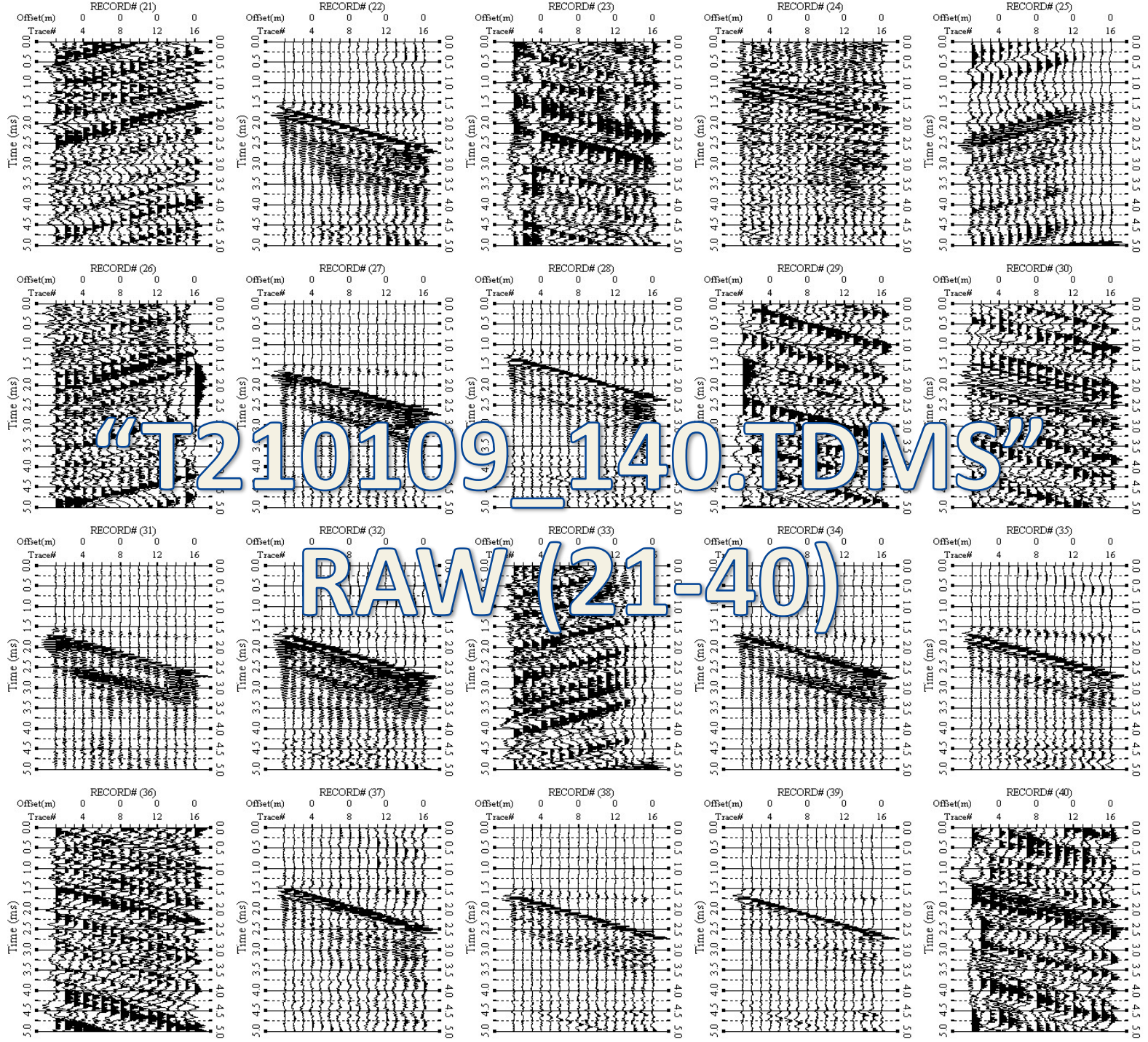
Dispersion Image (1-10)

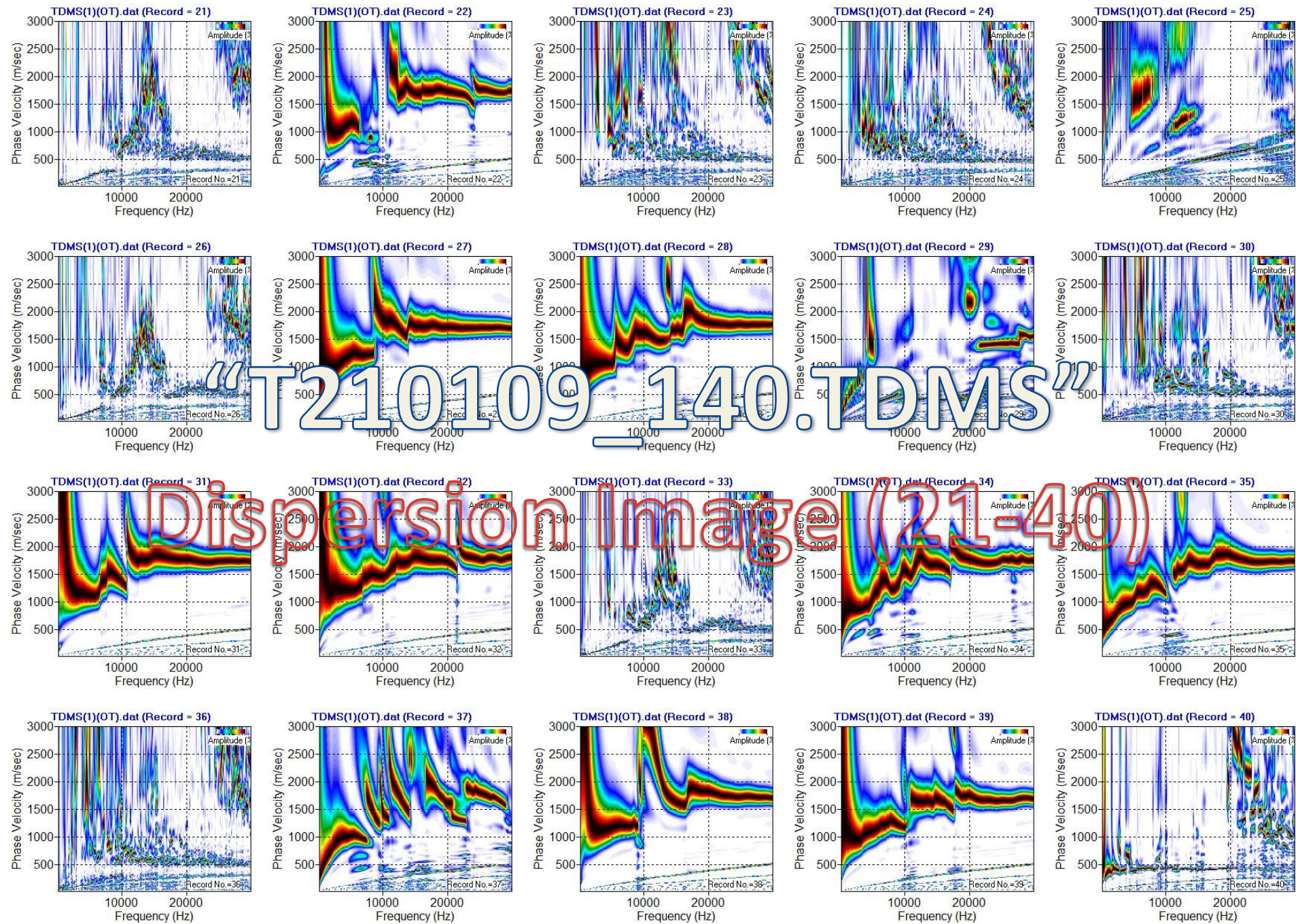
Display of RAW and Processed Records ("T210109_140.tdms")

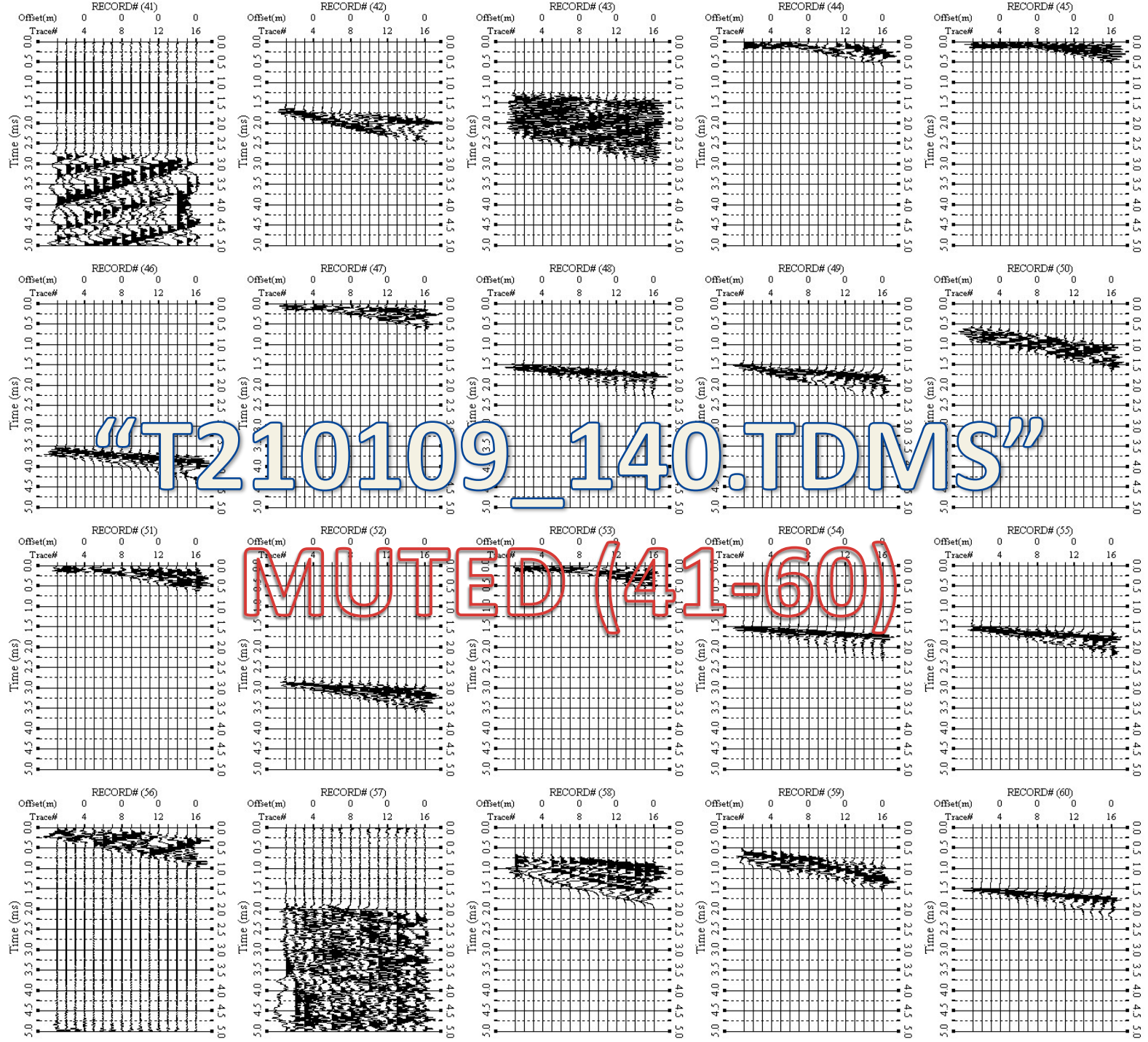
- RAW records (a total of 100 records)
- Automatically Muted Records
- Dispersion Image of Muted Records (20 records per slide)

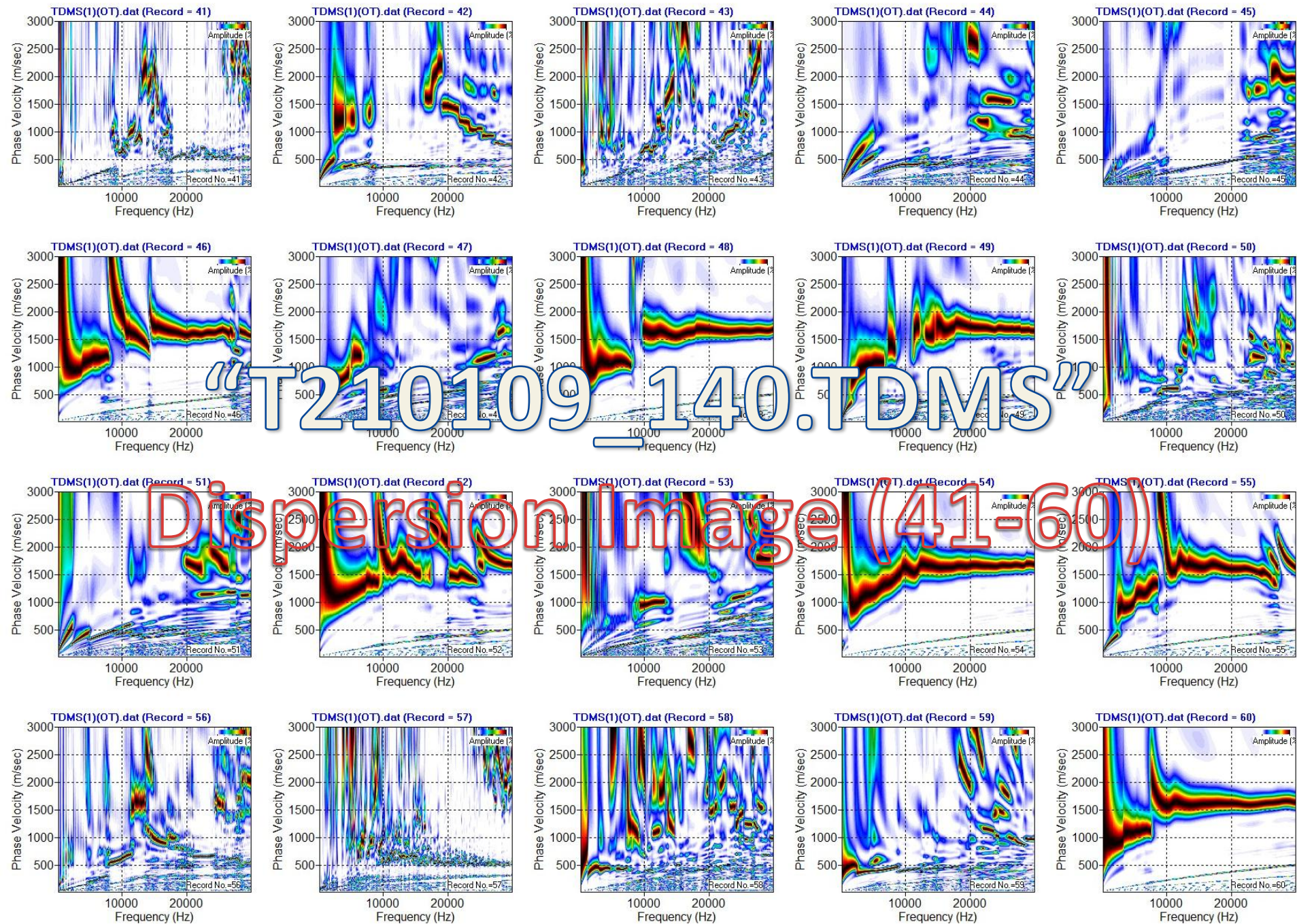


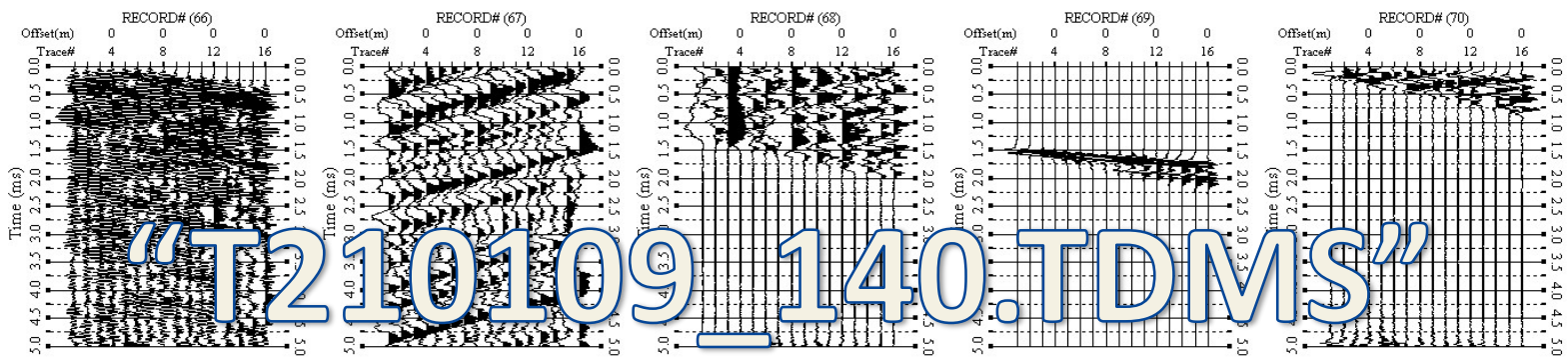
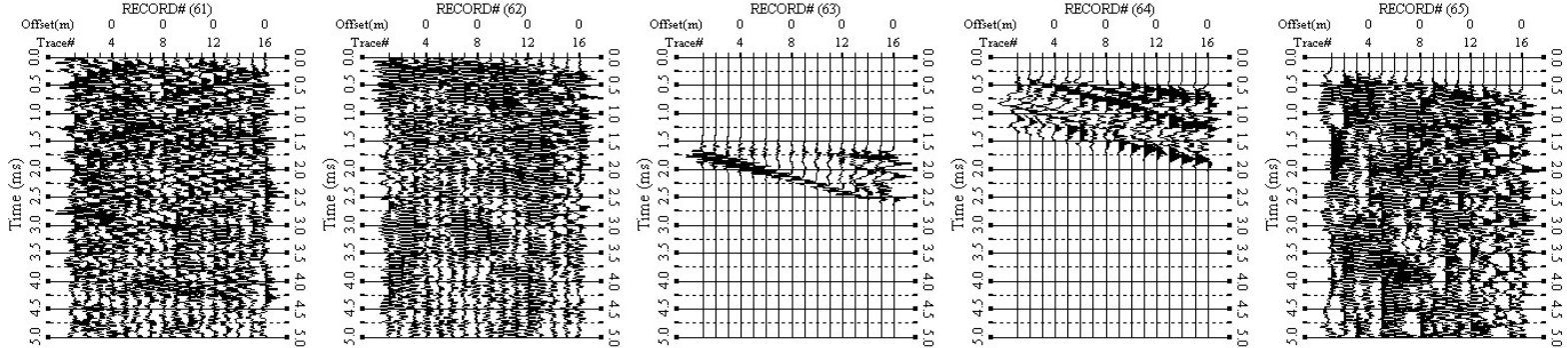




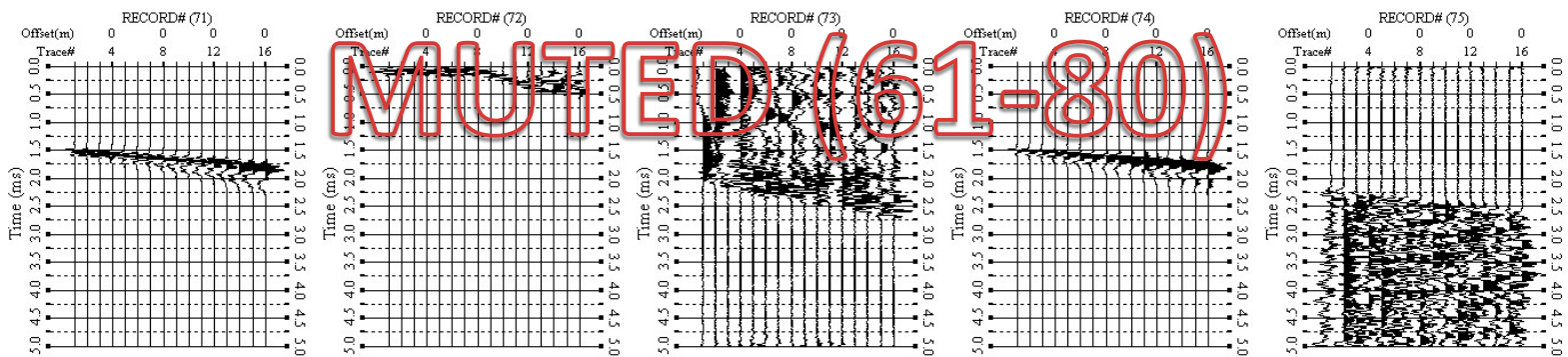




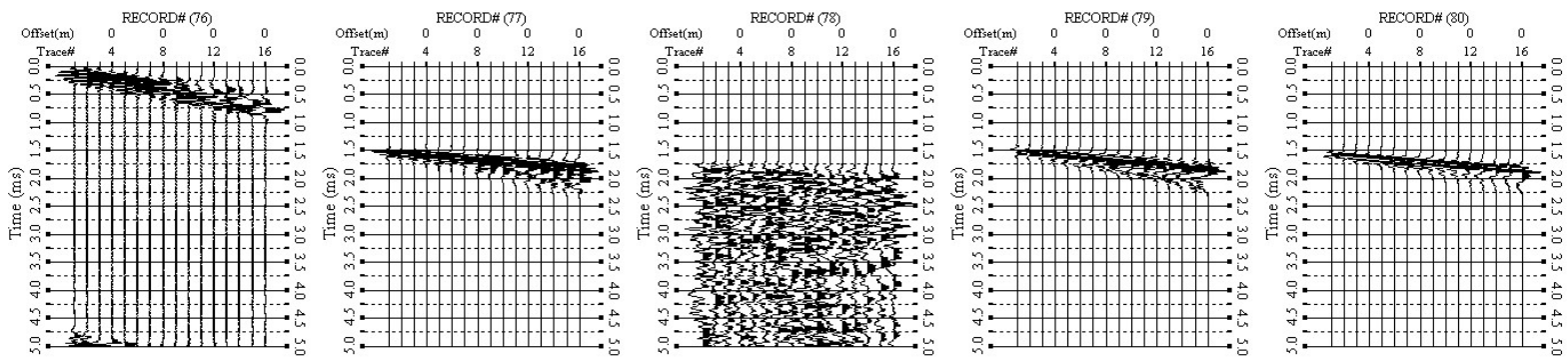


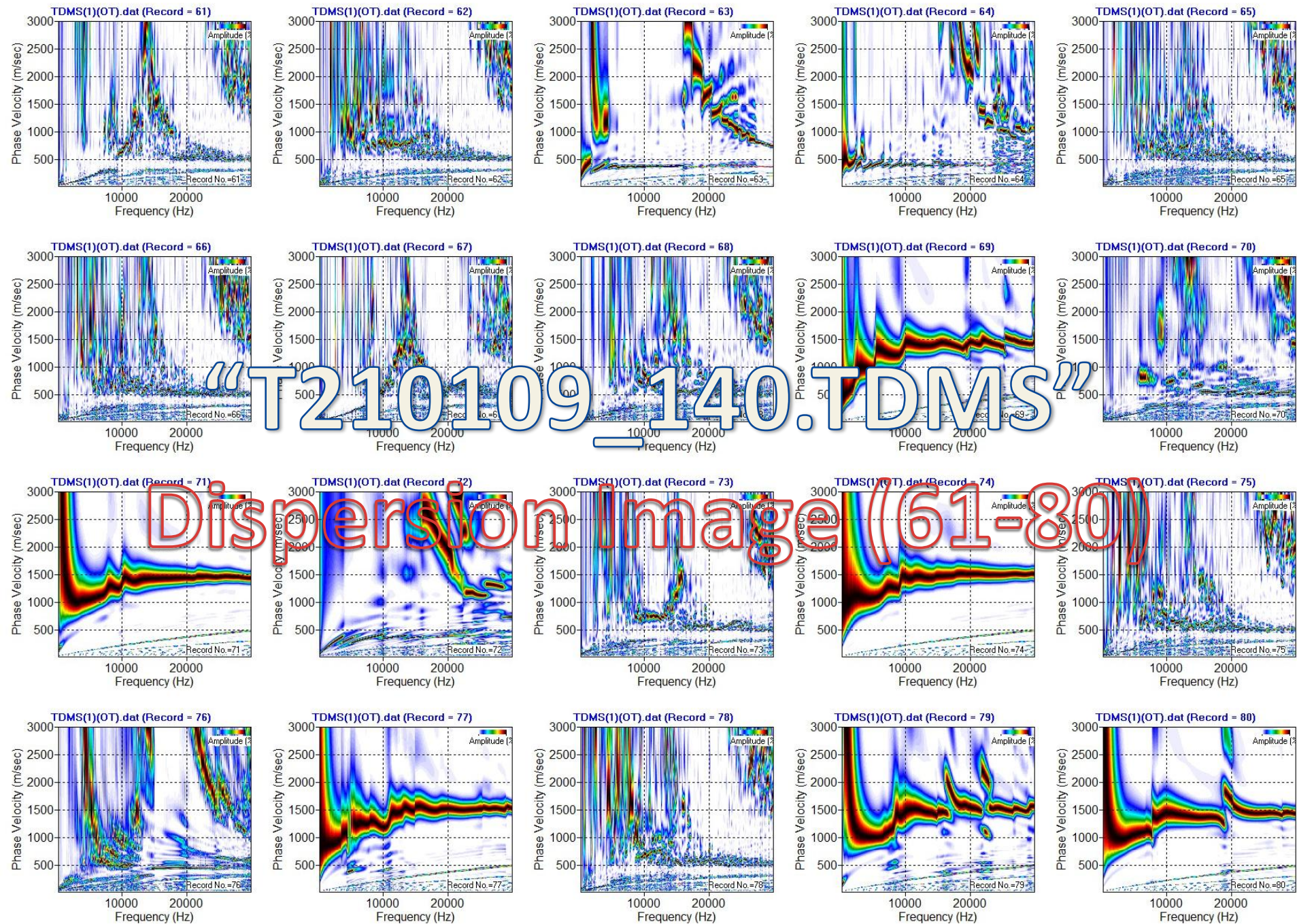


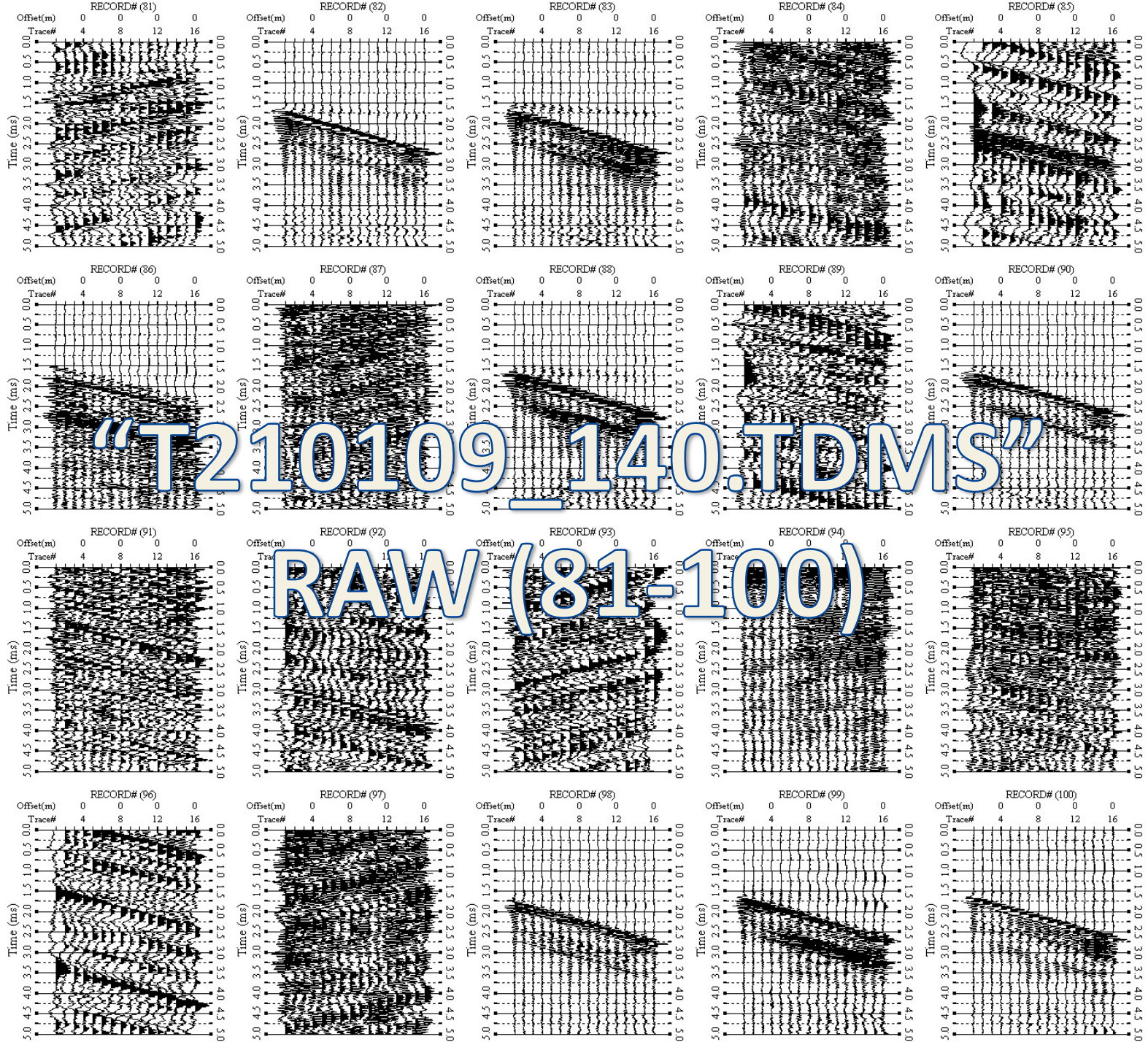
“T210109_140.TDMS”

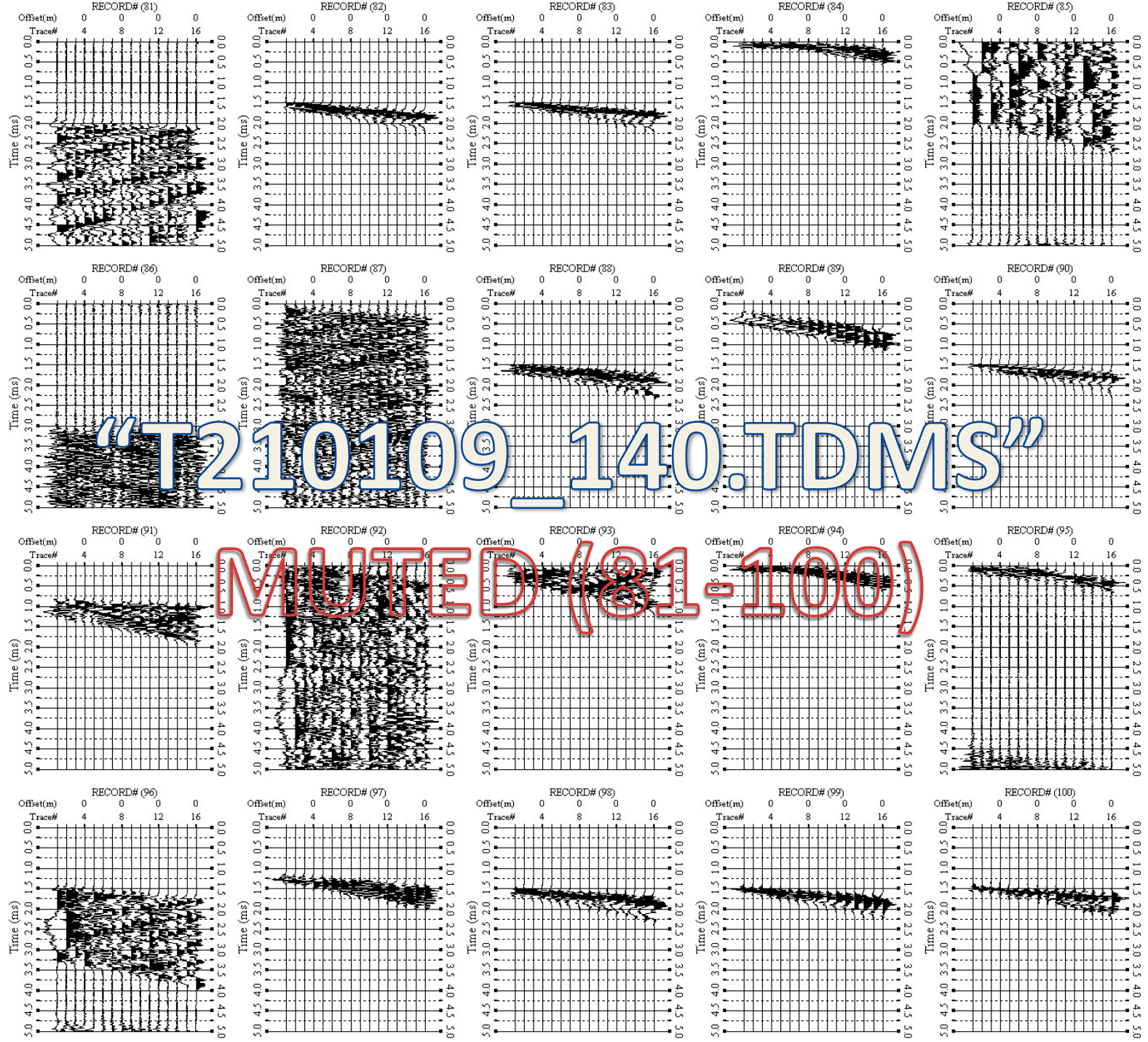


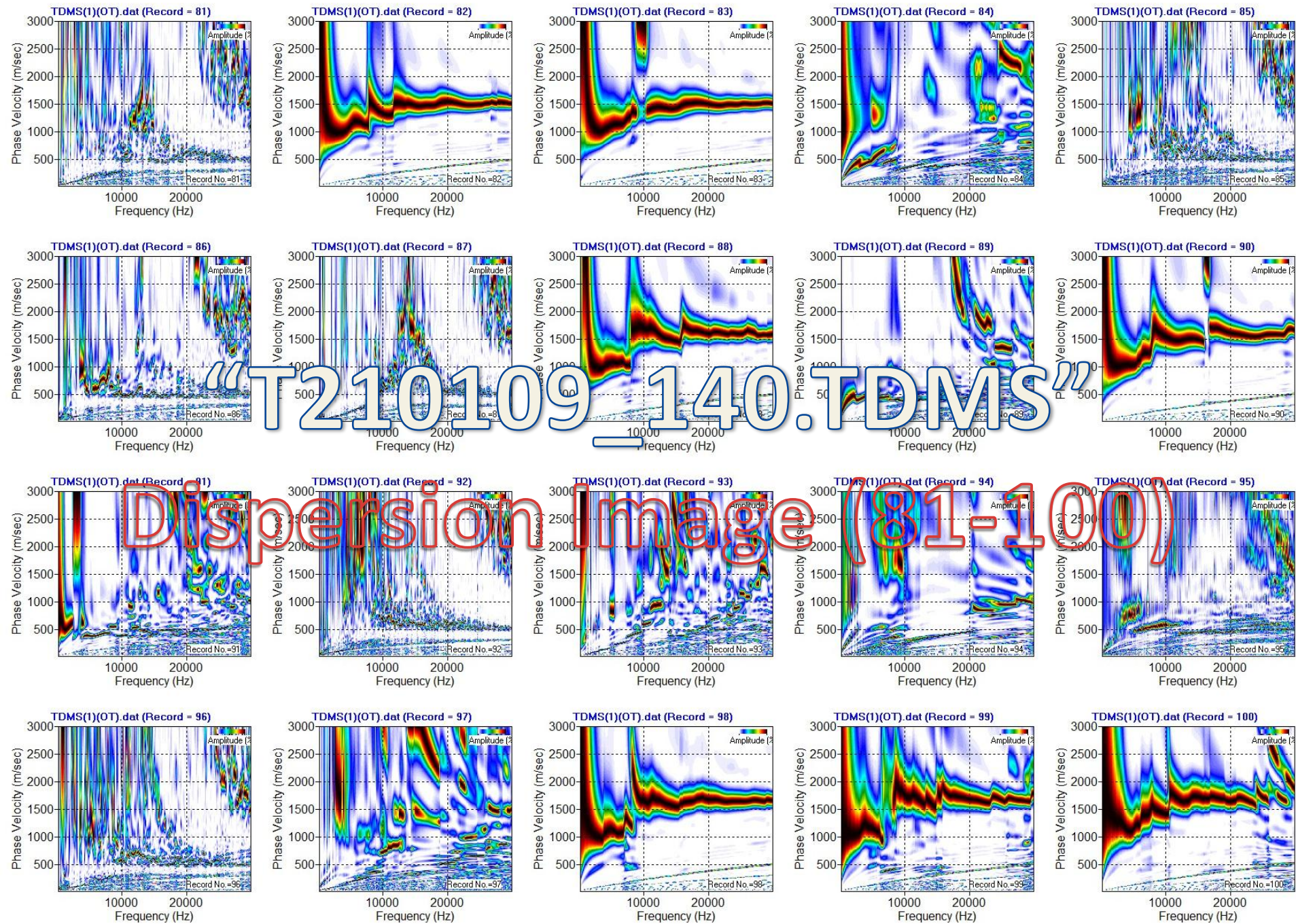
MUTED (61-80)











Example Dispersion Images from Different “Lateral Continuity (LC)” Values (“T210109_140.tdms”)

- For the first 20 records
- For LC = 0, 1, 2, and 3

